

Case study:

Superior Project Management Achieves Successful International Installation



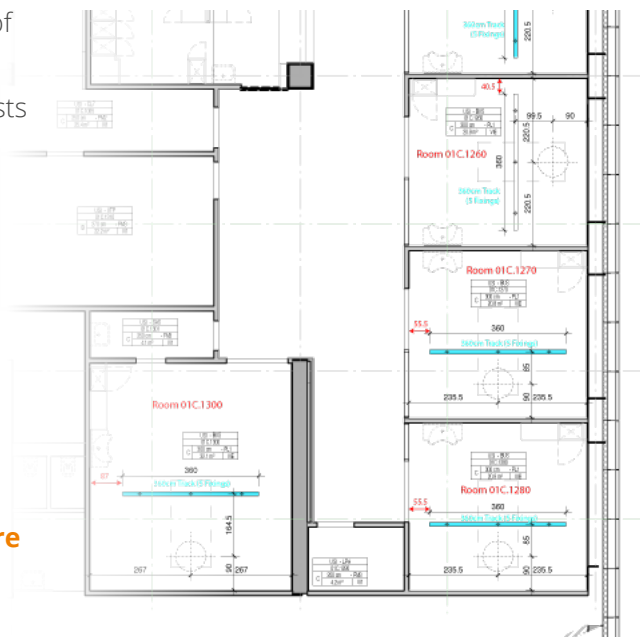
Superior Project Management Achieves Successful International Installation

The Brief

OpeMed products can be found **globally**, with installations of the OT200 Ceiling Hoist across Europe, Australasia, Asia and the Middle East. Our team of highly trained OpeMed specialists manage global projects from start to successful completion.

We were first approached by Chirec (Centre Hospitalier Interrégional Edith Cavell, a group of five hospital sites and 2 medical centres, offering treatment in every medical and surgical discipline) who had a proposal for a large scale hoist project at **Delta Hospital in Brussels, Belgium**.

Working in collaboration with our local long-term dealer (exclusive to Belgium) we undertook the installation of 42 rooms spanning across the hospital including: **Intensive Care units, Hydrotherapy units, Bariatric wards, Endoscopic units, Rehabilitation centres** and **Geriatric wards**.





The Installation

Working closely with Architects, Contractors and Chirec representatives, we offered **free consultations and design advice** to ensure that the Ceiling Hoists would provide the optimum advantage to carers and users.

Whilst looking at the structural requirements of the project, our specialists noted several rooms included a one metre ceiling void. Normally considered unsuitable, we had our team of experts analyse the problem and were able to **develop bespoke track bracing** able to securely support the tracking across the distance.

We were also able to develop bespoke frames for the service pipes to ensure the Ceiling Hoist system would not disturb the delicate services and wiring.

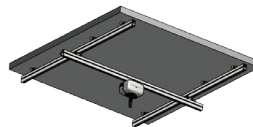
Through careful project management we installed across the forty two rooms **a series of Straight Track Systems** and **H-Systems**. H-Systems (sometimes referred to as an XY System) is a tracking configuration designed to cover a whole room. This system allows users to be transported anywhere within the room, meaning they are not constrained to one direction or destination.

Expected to complete in November 2016, the Chirec Delta Hospital is designed to be a large scale general hospital catering to thousands of residents across Brussels.



More details

H-Systems consist of two parallel track lengths that cover the length of a room. One perpendicular track is then suspended from these lengths allowing the hoist to traverse to any location in the room.



Straight Tracks come in many lengths, sizes and depths to accommodate the varying environments the tracking could be installed into, contact your local Product Specialist to discuss what system could be best for your project.



To find out more about OpeMed Tracking systems, please visit <http://www.opemed.net/product/ceiling-track/>

To discuss your project, contact the **OpeMed Team** and call **+44 (0) 1252 758858**

www.opemed.net