



## Accessible Adaptation Completes Home for Shropshire Family

### The Adaptation

Late 2016 we undertook a project for a family home adaptation in Shropshire. The family who were previously living in a more confined arrangement, needed an array of specialist equipment and adequate space to help support their daughter, Ellie who has Spina Bifida, high level spinal paralysis and associated severe curvature with non-invasive ventilation required.

Our product specialist was on-site to survey their new home, offer design advice and provide comprehensive information on our range of specialist equipment that would best suit the families needs. Spanning over three rooms, a **multi-room ceiling hoist system**, **assisted bath** and **free-standing height adjustable changing table** were installed. This adaptation not only provides the family with additional space to support Ellie, but also allows her to have improved dignity and independence whilst providing support for her family and carers reducing risk of injury/back strain and making caring for Ellie a more efficient process.

Maggie Downs, Independent Occupational Therapist said:

*"I have worked with OpeMed on numerous projects and their knowledge, expertise and **willingness to go the extra mile are invaluable**, particularly important in this complex project for Ellie. The combined practical, emotional and psychological impact of this suitability designed home has been truly incredible for Ellie and her family. **This adapted environment has allowed Ellie to become independent** with many activities, including being mobile indoors for the first time in her life. She is more lively, active and hugely motivated to "catch up" with all the usual life skills and tasks, which were impossible in her previous home. The OpeMed installation and equipment has facilitated a full care team to be employed and for Ellie's Mum and brother to **look forward to a life of their own, knowing that she is well supported**"*

The property was specially purchased by the Wrekin Housing Trust who in collaboration with Maggie Downs played a large part in securing a range of grants both statutory and charitable to help improve the lives of Ellie and her family.

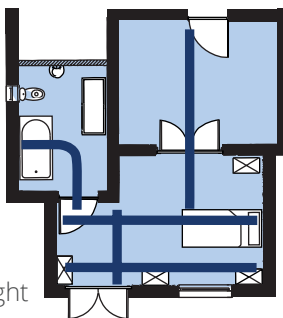
Steve Swann from the Wrekin Housing Trust said:

*"We are delighted to be able to provide and adapt this house, with the assistance of OpeMed, specifically for Ellie and her family. The accommodation has been carefully designed around some very complex needs resulting in a **fantastic space that really works.**"*



## Design and Install

The design and product placement in an installation like this is always very important. The users needs and requirements really need to be taken into consideration to ensure the family are fully supported. See below for elements installed into each room:



- Bathroom:** The bathroom includes a specialist height adjustable Assisted Bath and the Mona Free-Standing Height Adjustable Changing Table, positioned carefully in conjunction with the Overhead Tracking System on a 90° curve with a magnetic gate system that allows the hoist to pass from Bedroom to Bathroom.

- Bedroom:** To allow for full room coverage the OT200 Ceiling Hoist System has been installed in a H-Frame (X-Y) Configuration. This allows the user to traverse freely across the whole room and easily transferred from wheelchair to bed, to bathroom etc.

- Lounge:** A simple straight track was installed to allow to allow easy transfer from lounge to bedroom. The track features our multi-room Magnetic Gate system that allows the hoist to seamlessly pass from one room to another.

Maggie Downs explains "Ellie has had no access to a suitable bath for 6 years, so the new OpeMed bath installation has facilitated assisted entry and the ability to be safely left in the bath with additional cushions for the first time ever!

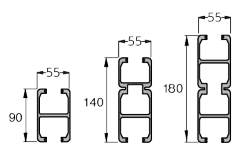
The height adjustable changing table also allows Ellie and her carers to transfer out of her wheelchair, sit on the table in its low position, and with minor assistance be involved with dressing and with sitting balance exercise.

The lifting system is "managed" by Ellie who is independently able to guide her carers and to instruct on use of slings etc. The multi-room coverage also means that Ellie can make use of her standing frame and, with some additional Physiotherapy input, use a standing sling for position changes."



## More Details

The Overhead Tracking System is available in 90° curves, 45° curves and Straight Track.



Available in varying depths suitable for supporting different lengths of track.



Our Magnetic Gate is integrated into the tracking system and ensures safe transfer moving from tracking in one room to another. When the two track ends meet, the gate locks them into place and opens a pathway. This allows a smooth, seamless and safe transfer from one room to another.



Read more about our Overhead Ceiling Track Solutions by visiting: <http://www.opemed.net/product/ceiling-track/>



For more information, contact the **OpeMed Team** and call **+44 (0) 1252 758858**

[www.OpeMed.net](http://www.OpeMed.net)