

## Case study:

### 26 Rooms for Bariatric Patients At Al Amiri Hospital



## Bariatric Patients Receive 26 Accessible Rooms At Al Amiri Hospital - Kuwait

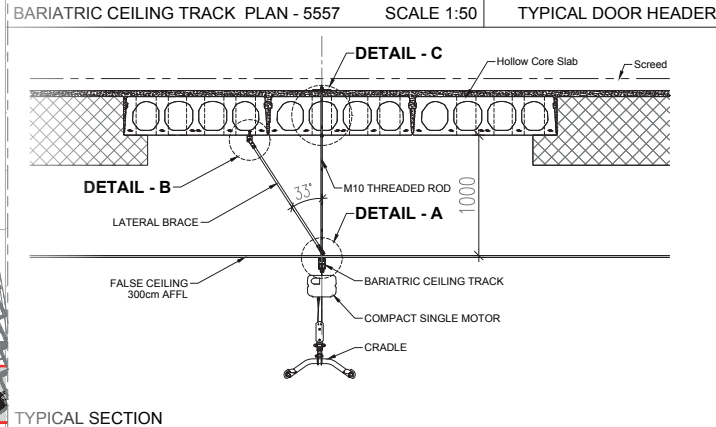
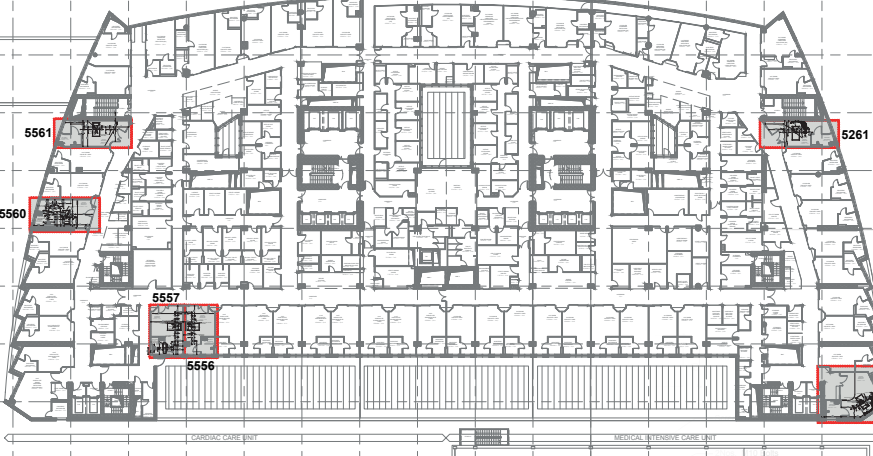
Our latest project, based in Kuwait, encompassed the installation of the OT400 Bariatric Ceiling Hoist.

### The MOH Hospital

Achievable through close communication and continual work with the Architect, Healthcare Planning Team and our Partner in Kuwait, OpeMed have consistently offered expert advice from concept through to installation of this high profile **MOH project** based in **Kuwait City**.

The **OT400 Bariatric Ceiling Hoist** with its unique gravity charging system, is a single motor ceiling hoist designed to for bariatric patients. Compact and quiet, the OT400 is able to fully support bariatric patient transfer whilst remaining unobtrusive. The key to success with this particular project has been avoiding the need for 2 different motors in each room whilst still offering quick and safe patient transfer, as well as patient positioning. This has been achieved by using **multi-room systems** that allow patients to be **transferred from one room to another**.

The carefully considered track layout has been designed to integrate into the **26 en-suite rooms** across several floors, and extra consideration has been made in co-ordination with the Architect and Main Contractor, to ensure a smooth and hassle free installation, whilst maximising optimum transfer for future patients.



## Bariatric OpeMed

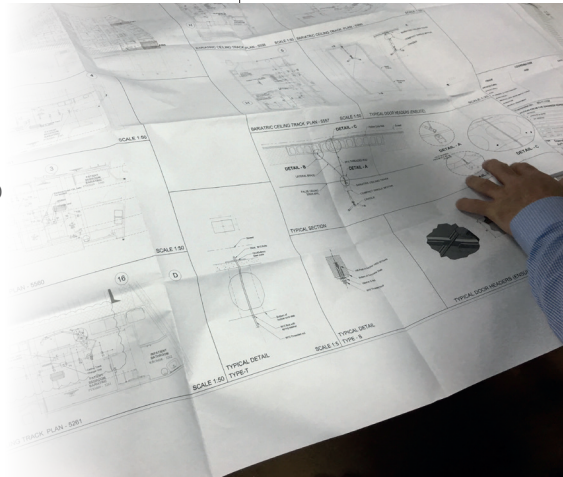
Bariatric patients require specialist positioning and our input from the start in the design has been critical. As patient positioning is so crucial in this project, the whereabouts of the tracking systems makes all the difference to the ease of transfer whilst using the finished product.

Our involvement at each stage, from design through to installation, was vital to the success of integrating the ceiling track system into the hospital without disrupting any other functions, and providing a quick and dignified transfer for patients.

It is always our pleasure to assist in international projects; offering our experience in installing overseas as simply and straightforward as in the UK and supplying high quality hoisting solutions across the world.

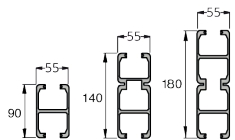
We can offer:

- **Turnkey provider** from assessment to installation and servicing
- Manufacturer's **cost saving**
- Short product lead times
- International **Project Management**
- **Complete range** of transfer and care products
- Unique compact ceiling hoist with no tools emergency lowering

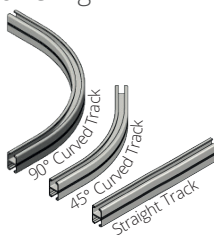


## More Details

The Overhead Tracking System is available in 90° curves, 45° curves and Straight Track.



Available in varying depths suitable for supporting different lengths of track.



Our Magnetic Gate is integrated into the tracking system and ensures safe transfer moving from tracking in one room to another. When the two track ends meet, the gate locks them into place and opens a pathway. This allows a smooth, seamless and safe transfer from one room to another.



For more information, contact the **OpeMed Team** and call **+44 (0) 1252 758858**

**[www.opemed.net](http://www.opemed.net)**