



Case Study

OT200 Ceiling Hoist, Shower Trolley Bolton, Autism Day Centre

New Day Centre to Offer Hoisting and Changing Facilities

OpeMed have completed a project for a brand new day centre in Bolton for adults with autism and additional services for adults with other disabilities.

Opening in the place of an old social club, Bolton Council have invested £2m on the renovation of the building to accommodate its new users by providing a more accessible facility.

The Equipment

As leading experts in hoisting and transferring equipment, OpeMed have designed a facility to accommodate users needing additional support for changing.

OpeMed installed four **H Style Ceiling Track Systems**, wall mounted into three bathrooms and a group activity room. The design of the tracking ensures coverage for the whole footprint of the room.

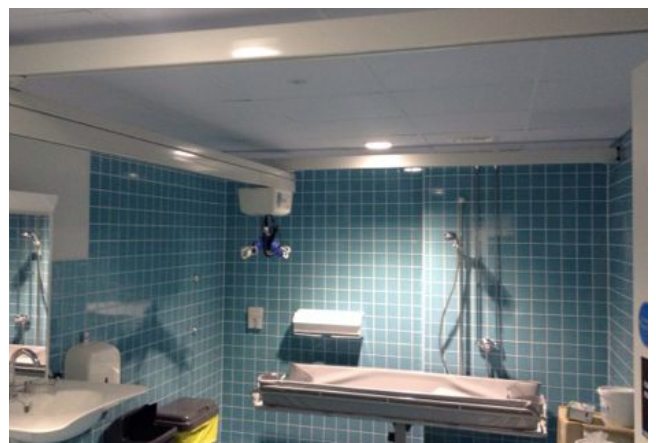
The **OT200 Ceiling Hoist** enables carers to reduce the amount of transfers and the risk of back injury from lifting the user. The hoist will provide accurate positioning and is gravity powered to recharge whilst in use.

The two **Height Adjustable Shower Trolleys** provide a waterproof stainless steel coated surface ideal for washing and changing, which can also be manually adjusted to suit the height of the carer.

Two **Height Adjustable Washbasins** were also installed to enable any users in wheelchairs easy access to the sink at a height suitable to them. These systems are adjustable by simple hand control and include a mirror and light system.



The OT200 ceiling hoist with standard spreader bar. Both hoist and track are very discreet featuring hidden brackets and white compact shells



H system ceiling track, OT200 ceiling hoist, height adjustable sink, height adjustable shower trolley