



Case Study

OT200 Ceiling Hoist

Legoland Hotel, Windsor

Theme Park Installs OpeMed Ceiling Hoist

Legoland chose to work with OpeMed to install two OpeMed Portable Ceiling Hoists in the themed hotel in Windsor. OpeMed were chosen thanks to their design input and the lightweight hoist that can be stored when not in use.

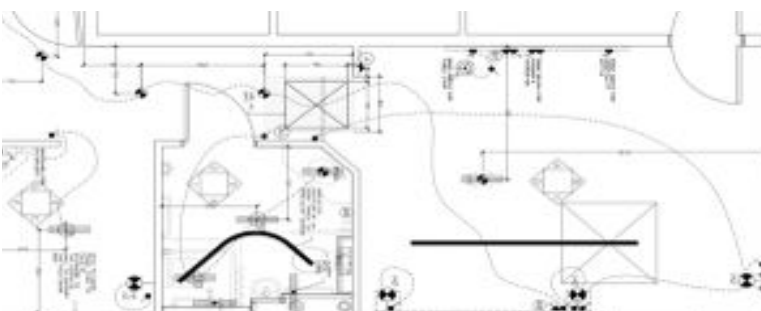
The Ceiling Hoists are installed in The Standard Kingdom and The Standard Adventure rooms in the hotel, which also feature a zip and link bed and wheelchair access forming 2 of the 14 accessible rooms.



OpeMed Portable Ceiling Hoist in 2 bedrooms at Legoland Hotel for quick and safe Bed-Chair and WC-Chair-Shower transfer



Adventure style room at the Legoland hotel



OpeMed room plan including Ceiling Hoist tracking paths in the bedroom and ensuite bathroom

Why a Ceiling Hoist?

The OpeMed Ceiling Hoist offers disabled users of the theme park the option of a relaxing stay at the hotel as their transferring needs are now met.

The track layout gives plenty of room for bed-chair or chair-wc-shower transfer.

The Hoist is the ideal solution for children and adults with restricted movement who need additional help with transfers from bed to toilet or bath for example.

The hoist requires minimal assistance from carers and can be supplied with a range of slings.