



Case Study

OT200 Ceiling Hoist

New Hospital Build – Hong Kong

The OT200 Ceiling Hoist is the choice of prestigious new Hospital – Hong Kong

OpeMed are proud to have installed, in partnership with JEC, the OT200 Ceiling Hoist throughout the impressive new Caritas Hospital in Hong Kong.

The client chose OpeMed due to its proven reliability, unique gravity-charging system and ability to design the layout around the hospitals needs.

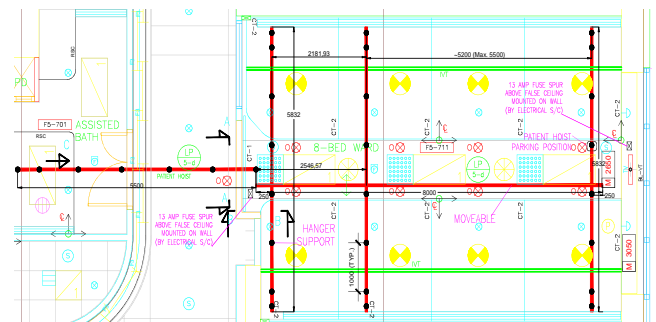
The OT200 has been installed in the Physiotherapy, Occupational Therapy, Prosthetics as well as the General Wards.



The Occupational and Rehabilitation Departments opted for multiple H systems to allow several patients to be assessed at the same time using the OpeMed walking harness



The OT200 is a self-charging unit with a weight capacity of 200kg to 400kg. The unique gravity-charging, no tools emergency lower and 6 point hanger bar ensure flexibility and reliability



OpeMed designed the optimum ceiling hoist track to maximize efficiency, minimise patient transfer, safety and comfort in all wards



Case Study

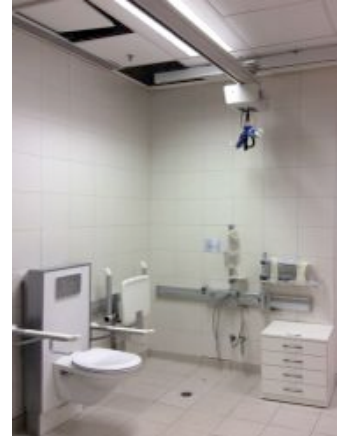
OT200 Ceiling Hoist

New Hospital Build – Hong Kong



The OT200 is easily installed and all parts can be exchanged whilst the hoist is on the rail. Standard parts give the OT200 the lowest cost of ownership on the market

The infra-red, easy glide H systems and 6 hook spreader bars give total flexibility on sling use whether used with walking harnesses for therapy, bathing or simple patient transfer



Hoists

Ceiling Hoists

Changing Tables

Showering Tables

Shower Chairs

Bathing

OpMed (Europe) Ltd
 Clockhouse, Farnham
 Surrey. GU9 7UD
 UNITED KINGDOM

www.opemed.net

T: +44 (0)1252 758858
 E: sales@opemed.net
 F: +44 (0)870 1619681