



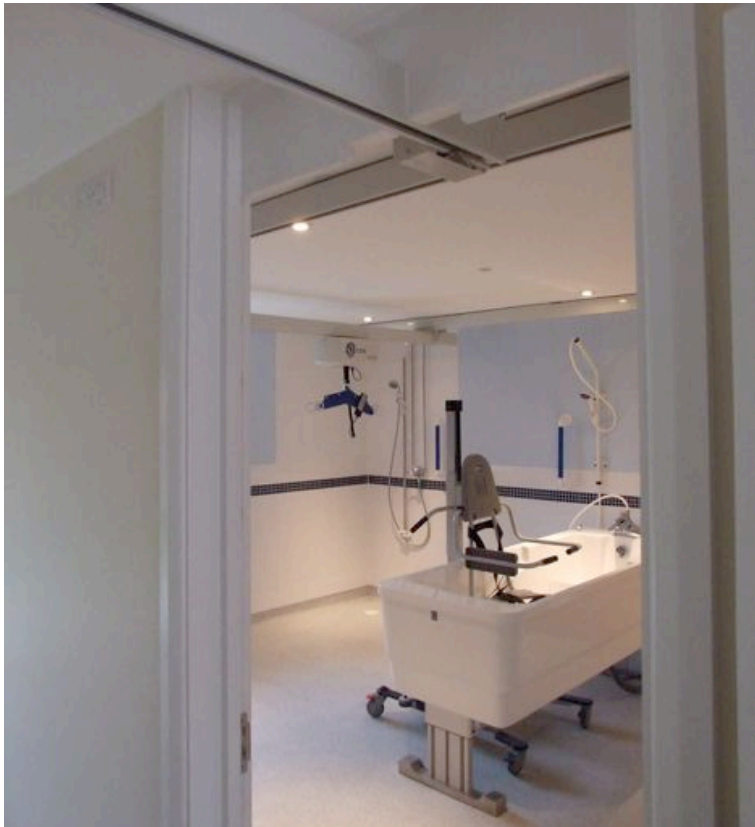
# Case Study

## Ceiling Hoists, Special Baths & Shower Trolleys in Residential Special Needs Centre - UK



### New Residential Centre opts for OpeMed Baths, Ceiling Hoists and Shower Trolleys

In partnership with Bromley Primary Care Trust and Cablesheer Construction, OpeMed installed 13 multi-room ceiling hoist systems, 6 special baths, 2 bathing hoists & 2 shower trolleys in the new special residential Cheyne Centre.



The client chose connecting systems using the unique OpeMed gate and turntable, enabling hoisting from the bed to bathroom and critically to the correct position over the bath.

Our gate and turntable are automatic so no manual handling or leaving the user's side are required.

As the OT200 charges itself whenever in use, down-time is never an option and reduces running costs by upto 25%.



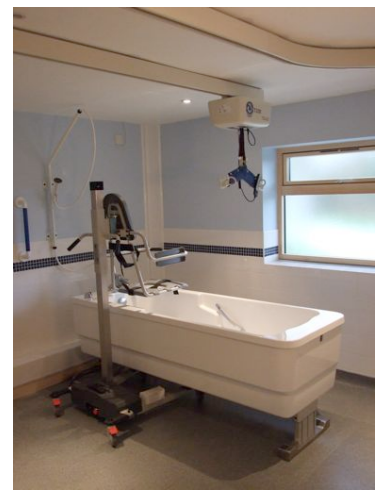
OT200 connecting from room to room shown with Comfort Bath and Bathing Hoist



OT200 over OpeMed 1700 Bath. Note the turntables bringing the track in from the bedroom over the bath & continuing into the next bedroom



OT200 on H System in Lounge/Kitchen

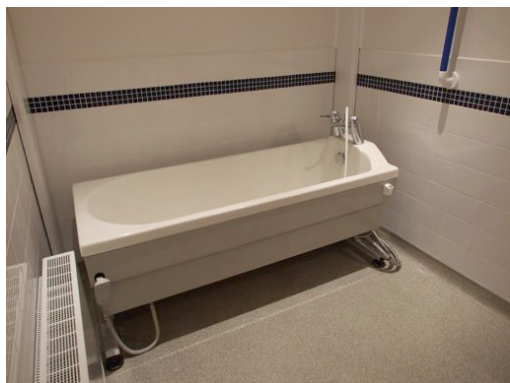


OT200 over Comfort Bath with OpeMed Bathing Hoist for patients that don't want to be sling transferred



# Ceiling Hoists, Special Baths & Shower Trolleys in Residential Special Needs Centre - UK

From the 6 baths provided, 3 models were chosen: a) OpeMed 1700 due to its small footprint, b) OpeMed Comfort due to its domestic styling and optional light and music systems, c) OpeMed 900 due to its large internal bathing space and integration with the bathing hoist.



OpeMed 1700 Bath – compact hi-lo bath for small spaces (1685mm)



OpeMed Comfort Bath – hi-end domestic style hi-lo bath with spa/lights/music options



OpeMed 900 Bath – large institutional hi-lo bath

The OpeMed shower trolley was chosen as it allows shallow bathing and its unique lateral overlap with the bed allows easy transfer. The shower trolleys can all be tilted in either direction if the patient would rather not be completely flat, can be used for changing, showering, shallow bathing right through to postural drainage.



The OpeMed bathing hoists were specified to allow non-sling transfer from the bed into the bath for the seated patient.



OpeMed Bathing Hoist for non-sling transfers from bed into any OpeMed bath (also available as stretcher version)



OpeMed pride themselves on their involvement at design stage, suggesting the best solutions on budget, on-time and with minimum disruption to the carer and user.

[www.opemed.net](http://www.opemed.net)

Hoists    Ceiling Hoists    Changing Tables    Showering Tables    Shower Chairs    Bathing

OpeMed (Europe) Ltd – 19 Riverside Business Park – Farnham – Surrey – United Kingdom  
 t: 01252 758858    e: sales@opemed.net