



Case Study

OT200 Ceiling Hoist and assisted baths across 28 rooms in specialist nursing centre



In partnership with B&K, OpeMed installed 28 OT200 ceiling hoists and 4 assisted baths into a specialist home in for children and adults with complex needs.

The unique shape of this project with the roof curving in two axis allowed OpeMed to illustrate how we work closely with the architect, builder and client.



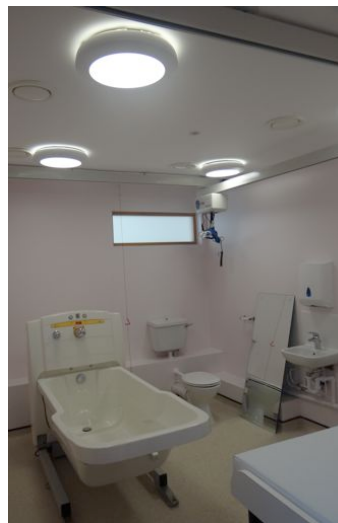
The OT200 Ceiling hoist was installed in the pool, lounge, bedrooms and assisted bathroom and the OpeMed 900 Assisted Bath in all of the specialist bathrooms.



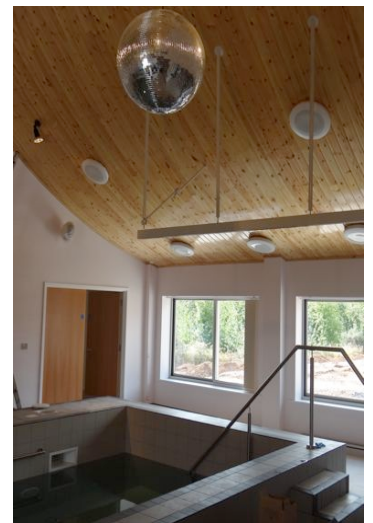
OT200 Ceiling Hoist on large H system in Lounge. The H System measured 6m x 13m and was installed on a curved roof. Even on a system of this size the OT200 glides smoothly and with little user interaction



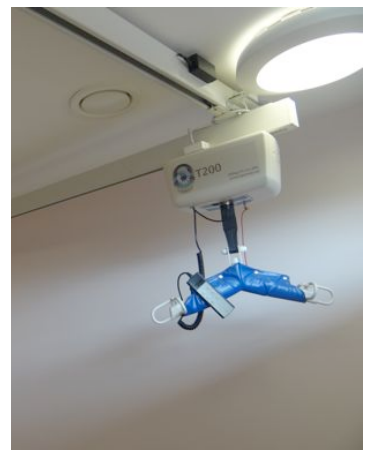
The turntable allows the hoist to run in several directions, and the 18 possible exit points achieve exact positioning over the WC or changing bench. The turntable is operated automatically by the hoist, so the carer never has to leave the patient's side to operate a switch



The OpeMed 900 bath has a large internal area, allowing full integration with a wide range of bath seats



The coated electronics and 316 grade stainless steel fixings ensure the hoist will continue to enable effortless transfers in and out of the pool



OpeMed pride themselves on their involvement at design stage, suggesting the best solutions on budget, on-time and with minimum disruption to the carer and user

Hoists

Ceiling Hoists

Changing Tables

Showering Tables

Shower Chairs

Bathing